



6.1.1 Rail Trail

Brandybrook to Little Colby Pond - develop an 8' paved multi-use path in the railroad corridor between the intersection of Brandybrook and Little Colby Pond. This will extend the rail-with-trail already being implemented between Lake Placid and Brandybrook.

Key Elements -

- 8' asphalt paved path; separated by fencing from the railroad tracks (see graphic) if tracks remain in place
- Extend the path across the Saranac River utilizing the existing bridge. Potential exists for either a parallel or cantilevered structure.
- A lower trail or trail built on stilts can be built between the bridge and Bloomingdale Avenue, where the railroad track exists on a narrow berm.
- Wayfinding signage and visual cues should be used to direct trail users to and from the village.

At-Grade Crossings - Brandybrook, Pine Street (twice), Bloomingdale Ave, Lake Colby Dr (Route 86)

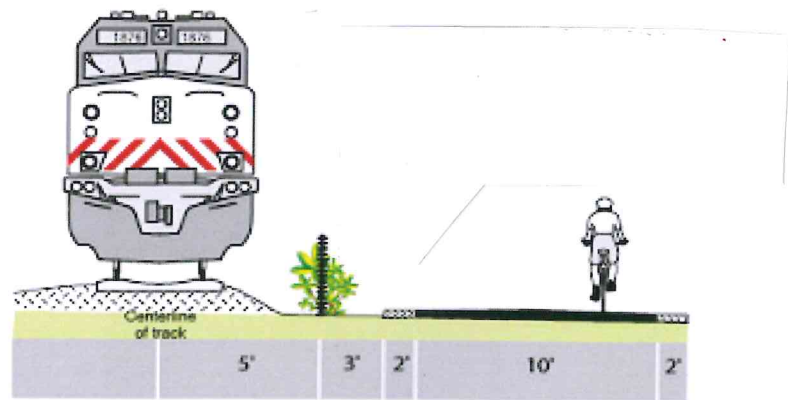
Trailheads - The Pines, VIS Herb Garden, Union depot

Ownership - Village of Saranac Lake, Town of St Armand, Town of Harrietstown, Town of North Elba.

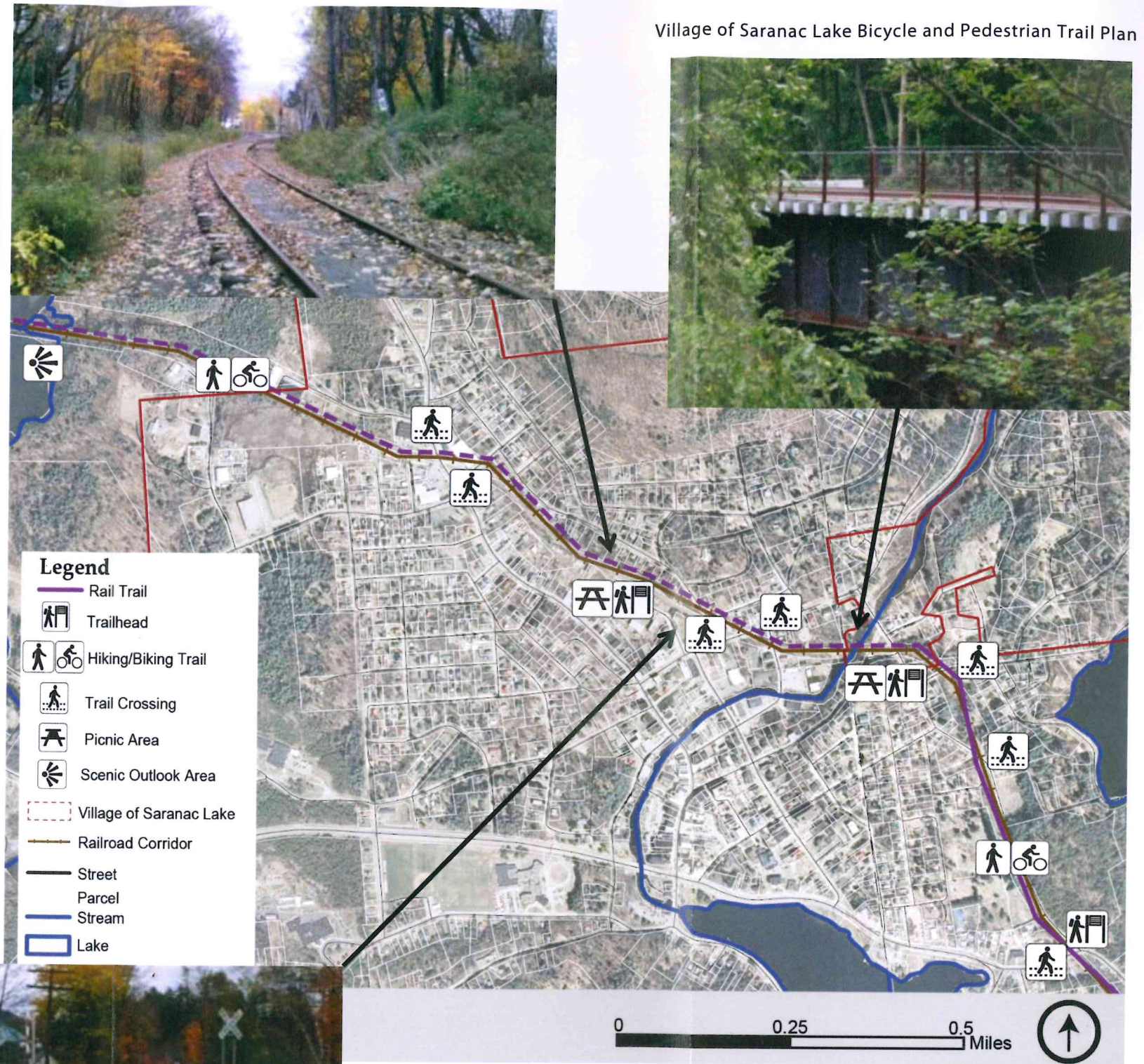
Length - 1.8 miles

Uses - pedestrians, cyclists, rollerblading, skateboarding

Planning Level Cost - \$1.5 Mil



Rail With Trail
Trail in Active Railroad Corridor



Village of Saranac Lake Bicycle and Pedestrian Trail Plan

